

DuraPack Python

High-Compaction Automated Side Loader



WE NEVER STOP WORKING FOR YOU.

www.Heil.com



Engineered for Speed. Built for Strength. Proven to Last.



Proven Power and Performance.

The DuraPack® Python® automated side loader combines two of Heil's most trusted designs in one high-performance package. The DuraPack body is legendary for toughness and productivity, while the patented Python® arm delivers unmatched speed, smoothness, and longevity. Together, they set the standard for efficiency and reliability in automated collection, helping fleets operate smarter and more profitably.

Speed that Pays for Itself.

With one of the fastest lift cycles in the industry, the DuraPack® Python® helps fleets finish routes faster and cut operating costs, saving up to \$15,000 per truck each year. Its eight-second lift cycle shaves four seconds per stop, adding up to an hour saved per day compared to competing models. The Auto Lift feature automates lifting of the cart into the dump position in one smooth motion with a single press of a button. Together, these features deliver more productivity per route, using less fuel, lowering labor costs, and providing a faster return on investment.

Strength You Can Count On.

The Python arm lifts up to 800 pounds, with cushioned cylinders that deliver smooth, controlled motion and protect both the arm and chassis from wear. Precision geometry minimizes spillage and ensures carts are consistently returned with lids closed. The DuraPack Python's optimized weight provides exceptional durability and higher payloads, delivering dependable performance and the lowest Total Cost of Collection (TCC).

Continuous Productivity.

The DuraPack® body's follower panel allows continuous dumping during the pack cycle, so operators can collect the next cart without waiting. Twin packing cylinders achieve outstanding payloads, enabling more homes per route and reducing trips to the disposal site. Every detail is designed to keep operators efficient, routes productive, and fleets running at maximum performance day after day.

Built Tough For Real World Conditions.

A fully welded, interlaced subframe resists abrasion, corrosion, and salt damage for exceptional longevity in demanding collection environments. The body is built with 7- and 8-gauge high-tensile steel, while the hopper features a ¼-inch AR400 floor and 3/16-inch AR400 sides for superior strength and durability. High-tensile steel withstands intense compaction forces to deliver maximum payloads with fewer trips. The reinforced tailgate prevents buckling and includes a 60-inch seal to keep liquids securely contained.

Reliability and Longevity Come Standard.

The Python lift arm's hardened grabber gears, made from high-strength alloy steel, virtually eliminate wear and can last up to 1,000,000 cycles. The Heil DuraMount design secures the lift to the chassis frame to reduce bolt fatigue and improve stability, while Service Smart bolt access simplifies maintenance. Together, these features ensure years of reliable performance and minimal downtime to keep your fleet operating at its best.



Add Integrated Lift Camera & Light

This integrated package provides the operator an exceptional view of the lift and surrounding environment.



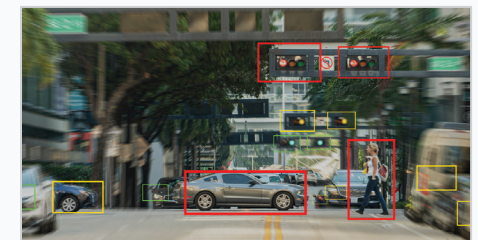
Add CNrG Tailgate

The lower profile, fully integrated CNrG® tailgate fuel delivery system will revolutionize the way you use CNG garbage trucks.



Add 3rd Eye Digital Package

Connect for service verification, fuel tax reporting, and route management with factory-installed 3rd Eye® Mobile, supporting up to six 1080p (FHD) resolution cameras at 30 FPS.



Add 3rd Eye Safety Technology

Increase safety and awareness with factory-installed 3rd Eye AI-powered safety technology, plus 360° visibility and reverse automatic braking to help improve operator confidence and control.

EVERY ROUTE. ONE BODY.

Introducing the engineering innovations of the Heil universal FEL/ASL body.

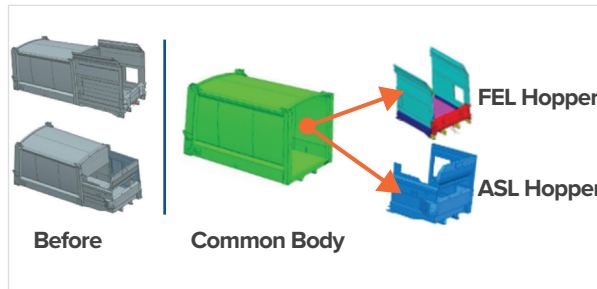


Introducing the 2026 Heil DuraPack Python and Half/Pack, built on a breakthrough common body platform that powers both front and side load applications. With shared components, unified, dramatically simplified in-cab systems, and major ease-of-maintenance improvements, this new generation delivers greater flexibility, and a streamlined operator experience. It's everything customers already trust, significantly enhanced with the most advanced design thinking in the industry.



OPERATOR EXPERIENCE

Designed with your operators in mind. Driver-designed, ergonomic controls and a simplified interface reduce cab clutter and cut in-cab buttons by 66%, delivering a consistent, intuitive experience across both ASL and FEL vehicles.



COMMON BODY PARTS

Standardized parts simplify operations. A shared body design with 44% or more common components means fewer parts to stock, easier technician training, and reduced downtime across both front and side load fleets.



IN-CAB DISPLAY

The in-cab display provides real-time feedback and full body control, putting all key information in one place. Maintenance teams can quickly diagnose issues away from hazards and weather, while integrated 3rd Eye® camera feeds remove the need for a separate monitor, improving visibility and cab space.



INTEGRATED CAMERAS / LIGHTS

Integrated 3rd Eye cameras come built into the body for better protection, less maintenance, and clearer visibility, all with fewer failures, less downtime, and improved safety, performance, and reliability in every environment.



EASE OF MAINTENANCE

Maintenance is faster and easier with improved access, fewer tools, and a centralized display for diagnostics, 3rd Eye feeds, and body performance data, plus relocated tailgate locks for cleaner, more convenient access.



SHUR-LOCK TAILGATE

Tailgate cylinders are now positioned in the tailgate bolster, away from payload, for cleaner operation. This design simplifies tag axle function and removes hydraulic components from the tag axle area. All tailgate commands are controlled through the touchscreen display, preventing accidental movement during transit.

SPECIFICATIONS

Performance Specifications	
Lift Capacity	Up to 800 lbs.
Lift Cycle Time*	8 seconds
Lift Reach	9 ft.
Compaction	Up to 900 lbs. per yd ³
Working RPM	800 (operate-in-gear-at-idle)

* Complete cycle time defined as grip, dump, return and release

Typical Chassis Configuration (Standard Tailgate)			23 yd ³	28 yd ³	33 yd ³
Min. GVWR			58000	58000	64000
Min. GAWR	Front		18000	18000	18000
	Rear		40000	40000	46000
Usable CT		in.	172+/-2	192+/-3	207+/-2
C.O.E. Wheelbase		in.	195+/-2	215+/-3	230+/-2
Conventional Cab Wheelbase		in.	240+/-2	260+/-3	275+/-2
Min. Platform		eject	in.	275	264
				335	

* Additional Requirements

- 425 ft.-lbs. required engine torque at pump shaft at idle.
- Neutral signal, brake signal, and R-stator signal dedicated for body builder use in cab.
- 130 amp alternator - minimum.

Automated Lift Specifications	
Lift Load Capacity	Up to 800 lbs.
Cycle Time	8 seconds @ idle
Reach	9'
Ground Clearance	20 in. from ground to bottom of grabber arms (based on a 42 in. chassis rail height)
Weight*	1,850 lbs. approximate
Controls	Joystick, air over hydraulic with feathering ability

* Weight includes standard 60/90 gallon grabbers

Cylinder Specifications				
Body Cylinders	Type	Bore x Stroke		
Tailgate Raise	(2) Double Acting	in.	3.25 x 35.16	
		mm	83 x 893	
Packer Panel	(2) Double Acting	in.	NA	
		mm	NA	
Packer/Ejector (Eject)	(2) Double Acting	in.	23 yd ³	5.5 x 128.49
			28 yd ³	5.5 x 158.32
			33 yd ³	5.5 x 181.68
		mm	23 yd ³	140 x 3,264
			28 yd ³	140 x 4,021
			33 yd ³	140 x 4,615
Tailgate Locking	(2) Double Acting	in.	3 x 3.62	
		mm	76 x 92	
Lift Cylinders				
Reach	(1) Double Acting	in.	3 x 16	
		mm	76 x 406	
Grab	(1) Double Acting	in.	3 x 8	
		mm	76 x 203	
Lift	(1) Double Acting	in.	3 x 16	
		mm	76 x 406	

Hydraulic Specifications	
PUMP	Operate-In-Gear-At-Idle (standard)
Type	Tandem Vane
Maximum Operating Pressure	2,500 psi (17,238kPa)
Working RPM	800 RPM approx.
Flow at Working RPM	28 GPM (106 LPM) approx.
OIL RESERVOIR	Chassis frame mounted
Gross Capacity	50 gallons (190 liters)
Filters	Return line 3 micron, 140 micron suction strainer
VALVES	
Packing Control	Electric, push button operated
Tailgate	Air operated toggle
Tailgate Locking	
Body Raise	

Body Specifications		23 yd ³	28 yd ³	33 yd ³	
Body Capacity		yd ³	19.30	24.40	29.00
		m ³	14.76	18.66	22.17
Tailgate Capacity	Standard	yd ³	3.87	3.87	3.87
		m ³	2.96	2.96	2.96
	CNrG	yd ³	4.04	4.04	4.04
		m ³	3.09	3.09	3.09
	Flat	yd ³	1.9	1.9	1.9
		m ³	1.45	1.45	1.45
Hopper Capacity		yd ³	4.7	4.7	4.7
		m ³	3.59	3.59	3.59
Overall Length		in.	236.22	267.25	294.22
		mm	6000	6788	7473
Overall Length (Tailgate Raised)		in.	315.31	346.34	373.31
		mm	8009	8797	9482
Overall Width		in.	101.88	101.88	101.88
		mm	2588	2588	2588
Overall Height Above Frame	Body Lowered (without hopper hood)	in.	101.35	101.35	101.35
		mm	2574	2574	2574
	Body Lowered (with hopper hood)	in.	107.43	107.43	107.43
		mm	2729	2729	2729
	Body Raised (without hopper hood)	in.	123.62	123.62	123.62
		mm	3165	3165	3165
	Body Raised (with hopper hood)	in.	142.86	142.86	142.86
		mm	3629	3629	3629
	Tailgate Raised (Standard Tailgate)	in.	131	131	131
		mm	3327	3327	3327
	Tailgate Raised (CNrG Tailgate)	in.	156.56	156.56	156.56
		mm	3977	3977	3977
Tailgate Raised (Flat Tailgate)	in.	119.55	119.55	119.55	
	mm	3036	3036	3036	
Gross Weight (Route Ready w/Standard Tailgate)	lbs.	13914	14693	15373	
	kg	6312	6665	6973	
Gross Weight (Route Ready w/CNrG Tailgate 7 Tanks)	lbs.	14558	15336	16016	
	kg	6603	6956	7265	
Gross Weight (Route Ready w/Flat Tailgate)	lbs.	13778	14557	15236	
	kg	6250	6603	6911	

All designs, specifications, and components are subject to change at the manufacturer's sole discretion at any time without notice. Data published herein is for information purposes only and shall not be construed to warrant suitability of the unit for any particular purpose, as performance may vary with the conditions encountered. The only warranty is our standard written Warranty Statement for this product at the time of shipment.



WE NEVER STOP WORKING FOR YOU

DuraPack Python

Automated Side Loader



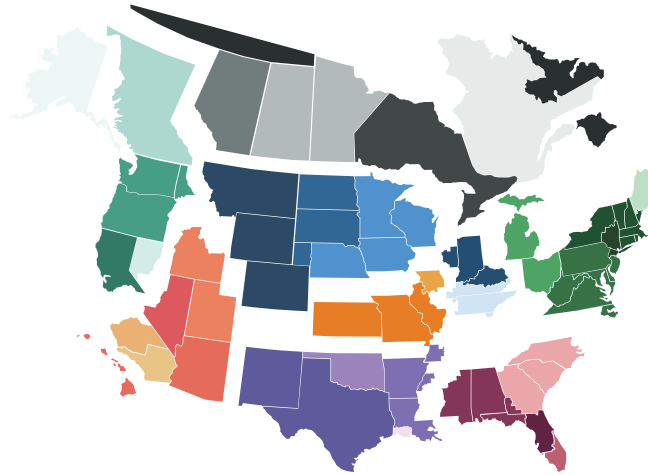
EXPEDITE THE PURCHASE OF YOUR HEIL UNIT THROUGH SOURCEWELL

Sourcewell Cooperative Purchasing Program has awarded Heil a nationally bid contract for "Solid Waste and Recycling Collection Equipment with Related Equipment, Accessories, and Supplies." Through the Heil contract, Sourcewell members can purchase any of the Heil line of refuse and recycling equipment, including front-loading, side-loading, and rear-loading refuse collection vehicles, without having to create an RFP and send the project through a time-consuming duplicate bid process. By using the existing nationally bid contract, members can receive the products they need more quickly and cost effectively. Best of all, Sourcewell membership is free! Qualified agencies can join online via the Sourcewell purchasing website at www.sourcewell-mn.gov. To find out more about purchasing Heil equipment via the Sourcewell contract, please contact your local Heil Dealer at www.heil.com/dealers.



TRUST HEIL CERTIFIED OEM PARTS

Heil Certified OEM parts are the most reliable replacement parts for Heil refuse collection vehicles. They're made following the exact specifications and production processes on the same assembly lines as the parts originally installed on the bodies. This means that they fit perfectly every time. Heil uses only the highest-quality materials for parts that last - minimizing costly downtime. For more information on parts, contact your Heil dealer. Visit: www.heil.com/dealers to find the dealer nearest you.



RELY ON EXPERIENCED LOCAL SUPPORT

When you buy from Heil, you gain the aftermarket support of the industry's strongest network of dealers in North America. We stand behind our dealers, so you get the product support you need for the life of your products. Our dealers are also trained to help you find the best product for your particular route needs. To find the Heil dealer nearest you, visit: www.heil.com/dealers.



All Heil products are Connected Collections® ready. This is part of our vision, focused on helping fleet owners make better decisions, faster. For more information on ESG's Connected Collections, contact your local Heil dealer or visit us online at www.heil.com/connected-collections



COUNT ON THE LOWEST TCC

Helping you save money is our passion, and we apply tremendous resources to advance our product and service offerings to improve the profitability of your business and provide the lowest Total Cost of Collection and the maximum return on your investment. You can be confident that choosing Heil equipment brings a long-term partnership with the industry leader.



CONFIGURATION ASSISTANCE

Chassis layout drawings are available through your local Heil dealer. To find your dealer, visit www.heil.com/dealers.



INDUSTRY-LEADING TRAINING

Heil has completely revamped their training programs with the addition of both the Heil Service Shack® and our four-tiered Nextelligence® Connected-Tech Training Program. Now, customers can visit the Heil Service Shack on the Heil website to learn the latest techniques and view helpful service and training videos any time, as well as sign up for Connected-Tech courses to better train technicians on Heil Refuse Products. Ensure your shops are servicing your Heil products correctly; check out the Heil training offerings at www.heil.com/nextelligence.

www.heil.com



WE NEVER STOP WORKING FOR YOU

www.heil.com

Contact your Heil® authorized dealer: