

# Half/Pack

THE leading front loader since 1969.



WE NEVER STOP WORKING FOR YOU.

[www.Heil.com](http://www.Heil.com)



# Built to Work Hard. Built to Last. Built for Every Route.



## Proven Strength and Performance.

The Heil® Half/Pack® front loader has earned its reputation by performing day after day in the most demanding collection environments. Its interlaced subframe and double walled hopper create a rigid, durable foundation designed to withstand intense compaction forces while maintaining long term structural integrity. With decades of refinement and real world validation, the Half/Pack delivers consistent performance, dependable uptime, and a proven path to lower total cost of collection.

## Productivity That Keeps Routes Moving.

Every element of the Half/Pack is designed to keep operators productive and routes on schedule. Fast arm and packer cycle times reduce idle time and allow more stops per shift, while efficient compaction maximizes payloads and minimizes disposal trips. Optional Lightning Cylinders further decrease cycle times, helping fleets complete routes faster without sacrificing control or durability.

## Lower Cost of Collection Starts Here.

The Half/Pack is engineered to deliver measurable savings over the life of the truck. Reduced maintenance points, simplified service access, and corrosion resistant components help keep trucks on route instead of in the shop. Increased payload efficiency and faster cycles translate directly into fuel savings, lower labor costs, and fewer trips, all contributing to one of the lowest total costs of collection in the industry.

## Confidence You Can Rely On.

Reliable sensor technology eliminates frequent adjustments associated with traditional proximity switches, providing precise control and consistent operation. Shur-Lock tailgate locks secure payloads and allow safe in cab operation, while integrated diagnostics give operators and technicians real time visibility into system performance. The result is predictable operation and confidence on every route.

## Engineered for Real World Durability.

From raised packer tracks to zinc plated hydraulic tubes, the Half/Pack is built to thrive in abrasive, corrosive environments. High tensile steel construction resists wear and fatigue, while hardened rod scrapers protect hydraulic components from contamination. These features work together to extend service life, reduce unplanned downtime, and preserve long term resale value.

## Designed to Fit Your Operation.

With multiple body sizes, weight optimized configurations, and compatibility with systems like the Curotto-Can®, the Half/Pack adapts to a wide range of residential and commercial applications. Whether navigating tight urban streets, servicing high volume commercial stops, or maximizing legal payloads in weight restricted areas, the Half/Pack delivers the flexibility fleets need without compromising performance or durability.

# Delivering The Lowest Total Cost of Collection (TCC) Up To \$97,420 Savings Over The Lifetime Of The Truck!

### Product Improvements

Reduced proximity switches and grease locations, which result in less maintenance costs.

Can add up to:

**\$10,330 Savings**

Over the lifetime of the truck

### H.A.L.O Controls

Newly updated controls reduce maintenance & training costs, all while increasing productivity\*.

Can add up to:

**\$48,140 Savings**

Over the lifetime of the truck

\*Only available on commercial FELs

### Lightning Cylinder Package

Decreased cycle time of Lightning Cylinders significantly increases productivity.

Can add up to:

**\$8,600 Savings**

Over the lifetime of the truck

### CNRG® CNG Tailgate

Removable valve cover plates allow for quick and easy access, which reduces maintenance costs.

Can add up to:

**\$20,600 Savings**

Over the lifetime of the truck

### Zinc Plated Hydraulic Tubes

Durable and corrosion resistant zinc hydraulic tubes reduces maintenance and downtime costs.

Can add up to:

**\$9,750 Savings**

Over the lifetime of the truck

# EVERY ROUTE. ONE BODY.

Introducing the engineering innovations of the Heil universal FEL/ASL body.

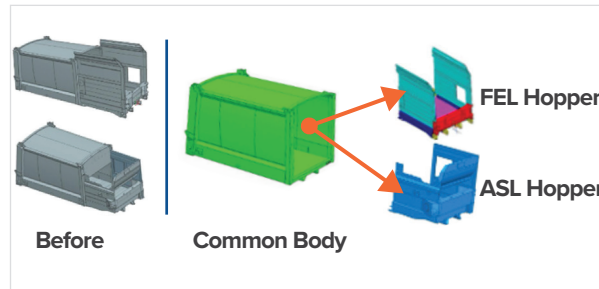


Introducing the 2026 Heil DuraPack® Python® and Half/Pack, built on a breakthrough common body platform that powers both front and side load applications. With shared components, unified, dramatically simplified in-cab systems, and major ease-of-maintenance improvements, this new generation delivers greater flexibility, and a streamlined operator experience. It's everything customers already trust, significantly enhanced with the most advanced design thinking in the industry.



## OPERATOR EXPERIENCE

Designed with your operators in mind. Driver-designed, ergonomic controls and a simplified interface reduce cab clutter and cut in-cab buttons by 66%, delivering a consistent, intuitive experience across both ASL and FEL vehicles.



## COMMON BODY PARTS

Standardized parts simplify operations. A shared body design with 44% or more common components means fewer parts to stock, easier technician training, and reduced downtime across both front and side load fleets.



## IN-CAB DISPLAY

The in-cab display provides real-time feedback and full body control, putting all key information in one place. Maintenance teams can quickly diagnose issues away from hazards and weather, while integrated 3rd Eye® camera feeds remove the need for a separate monitor, improving visibility and cab space.



## INTEGRATED CAMERAS / LIGHTS

Integrated 3rd Eye cameras come built into the body for better protection, less maintenance, and clearer visibility, all with fewer failures, less downtime, and improved safety, performance, and reliability in every environment.



## EASE OF MAINTENANCE

Maintenance is faster and easier with improved access, fewer tools, and a centralized display for diagnostics, 3rd Eye feeds, and body performance data, plus relocated tailgate locks for cleaner, more convenient access.



## SHUR-LOCK TAILGATE

Tailgate cylinders are now positioned in the tailgate bolster, away from payload, for cleaner operation. This design simplifies tag axle function and removes hydraulic components from the tag axle area. All tailgate commands are controlled through the touchscreen display, preventing accidental movement during transit.

# The Proven Workhorse, Customizable with Options for Your Specific Needs.

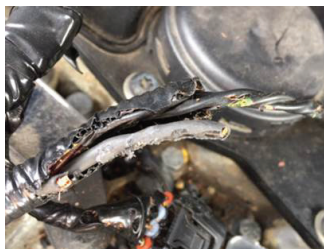
With one of the industry's deepest option lineups, the Half/Pack can be configured to match the exact demands of your routes, your crews, and your operation. Each available option is designed to integrate seamlessly into the truck, allowing you to tailor performance, controls, and functionality without compromising reliability or durability.

From advanced controls and automation to safety technology, performance upgrades, and specialized collection options, the Half/Pack gives you the flexibility to build a refuse truck that works the way you need it to, supporting efficient collection today while remaining adaptable as your needs evolve. One option includes a 20-cubic-yard body that shortens the wheelbase for improved maneuverability in urban environments, and may also qualify the vehicle for an FET exemption. Consult your tax adviser for details.



## Add Odyssey Controls

Optional Odyssey® Controls feature refined hydraulic and electronic control systems for efficiency, reliability and precise control. Odyssey controls come standard with an updated joystick containing integrated Pack Extend / Pack Retract functions.



## Add Rodent-Resistant Harness Looms

Optional rodent-resistant wiring harnesses are completely encapsulated in woven loom, greatly reducing down time from chewed wires.



## Heil Autonomous Lift Option (H.A.L.O.)

Semi-autonomous single button operation eliminates multi-control movement, reducing driver input by 82%. Greatly reduces training time & increases new driver productivity.

\*Only available with optional Odyssey Controls



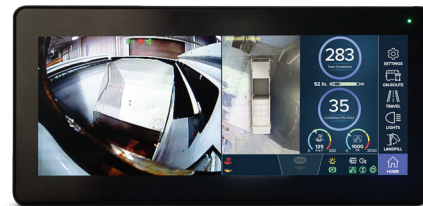
## Add Lightning Cylinder Package

Saves four seconds in dump cycle time. Only available with optional Odyssey Controls.



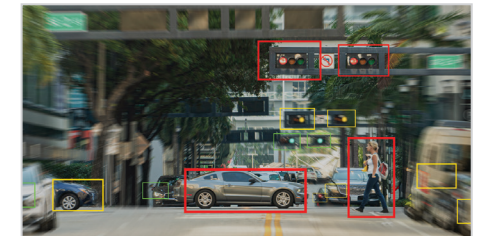
## Add 3rd Eye Digital Package

Connect for service verification, fuel tax reporting, and route management with factory-installed 3rd Eye Mobile, supporting up to eight 1080p (FHD) resolution cameras at 30 FPS.



## Add 3rd Eye 360 Camera System

Unlike traditional cameras, this multi-camera system provides a real-time, 360° bird's-eye view that enhances driver awareness and reduces blind spots.



## Add 3rd Eye Safety Technology

Increase safety and awareness with factory-installed 3rd Eye AI-powered safety technology, plus 360° visibility and reverse automatic braking to help improve operator confidence and control.



## Add Curotto-Can Commercial Grippers

Curotto-Can Commercial Gripper option enables efficient wheeled cart collection without sacrificing front loader performance.



## Half/Pack Automated Front Loader with Curotto-Can

The Curotto-Can Automated Carry Can has the fastest load time of any automated system on the market, with a proven 25% to 30% productivity advantage over automated side loaders. By using the reliability and capacity of a front loader, this carry can delivers game-changing performance that will enable you to service more customers, more quickly, in more applications.

- + Fastest load time available — four to five seconds from wheel stop to wheel start.
- + 20% greater fuel efficiency due to less packing and idling.
- + Shorter wheelbases allow navigation through cul-de-sacs up to 25% faster.
- + Eliminate cart loss and associated costs.
- + Eyes-forward operation enhances operator and public safety as well as reduces the risk of repetitive stress injuries.
- + A uniformed front load fleet, requires fewer spare trucks and helps standardize your inventory.
- + Reduce contamination rates to less than 5%.
- + Low 108" cart dump height for safer operation — well below typical wires, trees and other overhead obstructions.
- + Load bulk material with easier access to container waste, eliminate the need for a chase truck.
- + Convert any commercial front loader to a residential collection unit in minutes.



## Half/Pack Sierra

A Mid-Weight Package with Heavy-Duty Performance. Get proven heavy-duty performance in a mid-weight package, specifically designed for areas with weight restrictions.

- + The Half/Pack Sierra weighs just 18,277 lbs. vs. 19,000 lbs. for the same size standard Half/Pack, meaning up to a half ton of extra payload.
- + Fast packer and arm cycle times, plus up to a 10-ton payload capacity means that you can collect more quickly, without being overweight.
- + The Half/Pack Sierra contains the following standard features: Streetwise Hydraulics, Double-Walled Hopper, Shur-Lock Tailgate Locks, and Raised Packer Tracks.

## State-of-the-art Design & Materials Maximize Payload Without Sacrificing Quality or Durability.

For waste hauling customers who demand larger legal payloads without jeopardizing durability and dependability, Heil offers the Half/Pack Sierra and Half/Pack LowRider front refuse bodies. These optional body configurations are ideal for waste haulers in areas where weight requirements are more stringent, and want to transport the largest legal payload without the worry of incurring overweight citations.

## Half/Pack LowRider

The Heil Half/Pack LowRider delivers both residential and commercial performance that will change the way fleet owners define productivity and safety.

Hitting the streets 12" lower than a standard front loader and tipping the scales at 1,600 lbs. less than our standard Half/Pack, fleet owners can service more customers and pack up to one ton more payload. Add in Lightning Cylinders and you have a 23% faster container dump cycle when compared to a non-Lightning equipped Heil front loader. Combine all of this with Odyssey Controls and you have more uptime due to there not being any prox switches, cylinder cushions, air lines, or MAC valves.

# SPECIFICATIONS

| Recommended Chassis Requirements             |  |                                | Half/Pack                  |   |           |           | Half/Pack Sierra |   |           |           | Half/Pack LowRider |   |           |           |     |
|--|--|--------------------------------|----------------------------|---|-----------|-----------|------------------|---|-----------|-----------|--------------------|---|-----------|-----------|-----|
| <b>Body Specifications</b>                   | Body Capacity                                  | yd <sup>3</sup>                | 20                         | 23  | 28        | 33        | 20               | 23  | 28        | 33        | 20                 | 23  | 28        | 33        |     |
|  | Hopper Capacity                                | yd <sup>3</sup>                | 11                         | 11  | 11        | 11        | 11               | 11  | 11        | N/A       | 11                 | 11  | 11        | N/A       |     |
|  | Gross Capacity                                 | yd <sup>3</sup>                | 31                         | 34  | 39        | 44        | 31               | 34  | 39        | N/A       | 31                 | 34  | 39        | N/A       |     |
|  | Gross Weight (approx.)                         | lbs.                           | 17,589                     | 18,200  | 19,000    | 20,100    | 17,526           | 18,038  | 18,277    | N/A       | 16,188             | 16,700  | 17,400    | N/A       |     |
|  | (% Lighter Than Standard 28yd Half/Pack)       |                                |                            | 7%  | 4%        | 0%        | -6%              | 8%  | 5%        | 4%        | N/A                | 15%   | 12%       | 8%        | N/A |
|  | Overall Length (Arms down, forks fully tucked) |                                | in.                        | 376   | 378       | 409       | 436              | 376   | 378       | 409       | N/A                | 376   | 378       | 409       | N/A |
|  | Overall Width                                  |                                | in.                        | 101.88  | 101.88    | 101.88    | 101.88           | 101.88  | 101.88    | 101.88    | N/A                | 101.88  | 101.88    | 101.88    | N/A |
|  | Overall Height                                 | Arms Down                      | in.                        | 109   | 109       | 109       | 109              | 109   | 109       | 109       | N/A                | 99.8  | 99.8      | 99.8      | N/A |
|  |  | Arms Up                        | in.                        | 118.3   | 118.3     | 118.3     | 118.3            | 118.3   | 118.3     | 118.3     | N/A                | 118.3   | 118.3     | 118.3     | N/A |
|  | Hopper Opening                                 |                                | in.                        | 80 x 96.3   | 80 x 96.3 | 80 x 96.3 | 80 x 96.3        | 80 x 96.3   | 80 x 96.3 | 80 x 96.3 | N/A                | 80 x 96.3   | 80 x 96.3 | 80 x 96.3 | N/A |
| Body Drain Standard                          |  |                                | Yes                        |   |           |           | No               |   |           |           | Yes                |   |           |           |     |
| <b>Hydraulic Specifications</b>              | Pump   | Type                           | Single Vane                |   |           |           | Single Vane      |   |           |           | N/A                |   |           |           |     |
|  |  | Maximum Operating Pressure     | psi                        | 2,500   |           |           |                  | 2,500   |           |           |                    | N/A   |           |           |     |
|  |  | Working RPM (Throttle Advance) | RPM                        | 1,350   |           |           |                  | 1,350   |           |           |                    | N/A   |           |           |     |
|  |  | Flow at Working RPM            | GPM                        | 50  |           |           |                  | 50  |           |           |                    | N/A   |           |           |     |
|  | Oil Reservoir                                  | Tank Capacity                  | gal.                       | 51  |           |           |                  | 51  |           |           |                    |   |           |           |     |
|  |  | Filters                        |                            | 3 micron return filter with in-cab monitor<br>100 mesh reusable suction screen  |           |           |                  | 3 micron return filter with in-cab monitor<br>100 mesh reusable suction screen  |           |           |                    | N/A   |           |           |     |
|  | Valves   | Body Valve Type                |                            | Air over hydraulic, Multi-section stack valve,<br>55 GPM @ 2,500 PSI relief valve to prevent overload<br>damage                           |           |           |                  | Air over hydraulic, Multi-section stack valve,<br>55 GPM @ 2,500 PSI relief valve to prevent overload<br>damage                           |           |           |                    | N/A   |           |           |     |
|  |  | Tailgate Valve Type            |                            | Electric over hydraulic manifold, Multi-section stack valve<br>combination, 13 GPM @ 2,500 psi relief valve to prevent<br>overload damage |           |           |                  | Electric over hydraulic manifold, Multi-section stack<br>valve combination, 13 GPM @ 2,500 psi relief valve to<br>prevent overload damage |           |           |                    | N/A   |           |           |     |
|  | <b>Hydraulic Specifications</b>                | Pump                           | Type                       | Load Sensing HAWE Piston Pump   |           |           |                  | Load Sensing HAWE Piston Pump   |           |           |                    | Load Sensing HAWE Piston Pump   |           |           |     |
|  |  |                                | Maximum Operating Pressure | psi   | 2,500     |           |                  |   | 2,500     |           |                    |   | 2,500     |           |     |
| Working Engine RPM (Throttle Advance)        |  |                                | RPM                        | 1,250 RPM & 116% PTO  |           |           |                  | 1,250 RPM & 116% PTO  |           |           |                    | 1,250 RPM & 116% PTO  |           |           |     |
| Flow at Working RPM                          |  |                                | GPM                        | 50  |           |           |                  | 50  |           |           |                    | 50  |           |           |     |
| Oil Reservoir                                |  | Tank Capacity                  | gal.                       | 51  |           |           |                  | 51  |           |           |                    | 51  |           |           |     |
|  |  | Filters                        |                            | 3 micron return filter with in-cab monitor<br>100 mesh reusable suction screen  |           |           |                  | 3 micron return filter with in-cab monitor<br>100 mesh reusable suction screen  |           |           |                    | 3 micron return filter with in-cab monitor<br>100 mesh reusable suction screen  |           |           |     |
| Valves                                       |  | Body Valve Type                |                            | Electric over hydraulic manifold, Multi-section stack valve<br>combination, 50 GPM @ 2,500 psi relief valve to prevent<br>overload damage |           |           |                  | Electric over hydraulic manifold, Multi-section stack<br>valve combination, 50 GPM @ 2,500 psi relief valve to<br>prevent overload damage |           |           |                    | Electric over hydraulic manifold, Multi-section stack<br>valve combination, 50 GPM @ 2,500 psi relief valve to<br>prevent overload damage |           |           |     |
|  |  | Tailgate Valve Type            |                            | Electric over hydraulic manifold, Multi-section stack valve<br>combination, 13 GPM @ 2,500 psi relief valve to prevent<br>overload damage |           |           |                  | Electric over hydraulic manifold, Multi-section stack<br>valve combination, 13 GPM @ 2,500 psi relief valve to<br>prevent overload damage |           |           |                    | Electric over hydraulic manifold, Multi-section stack<br>valve combination, 13 GPM @ 2,500 psi relief valve to<br>prevent overload damage |           |           |     |
| <b>Performance Specifications</b>            | Compaction Force                               |                                | lbs.                       | 117,000   |           |           |                  | 117,000   |           |           |                    | 117,000   |           |           |     |
|  | Arm Cycle Time                                 | Up                             |                            | idle - 10-12 sec - 1,200 RPM - 7-8 sec  |           |           |                  | idle - 10-12 sec - 1,200 RPM - 7-8 sec  |           |           |                    | idle - 9-11 sec - 1,200 RPM - 5-6 sec   |           |           |     |
|  |  | Complete                       |                            | idle - 20-23 sec - 1,200 RPM - 14-17 sec  |           |           |                  | idle - 20-23 sec - 1,200 RPM - 14-17 sec  |           |           |                    | idle - 18-21 sec - 1,200 RPM - 11-14 sec  |           |           |     |
|  | Packer Cycle Time                              |                                |                            | 18-22 sec   |           |           |                  | 18-22 sec   |           |           |                    | 18-22 sec   |           |           |     |
|  | Arm Lifting Capacity                           |                                | lbs.                       | 8,000   |           |           |                  | 8,000   |           |           |                    | 5,500 (8,000 optional)  |           |           |     |
|  | Clearance-Stop-Tail-Back-Up-Lamp               |                                |                            | FMVSS 108   |           |           |                  | FMVSS 108   |           |           |                    | FMVSS 108   |           |           |     |
| <b>Odyssey Controls (Electric/Hydraulic)</b> |  |                                |                            |   |           |           |                  |   |           |           |                    |   |           |           |     |



**WE NEVER STOP WORKING FOR YOU**

**Half/Pack**

Front Loader



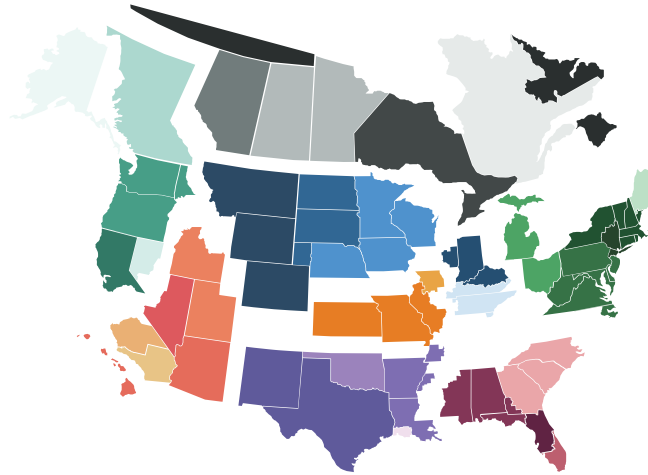
**EXPEDITE THE PURCHASE OF YOUR HEIL UNIT THROUGH SOURCEWELL**

Sourcewell Cooperative Purchasing Program has awarded Heil a nationally bid contract for "Solid Waste and Recycling Collection Equipment with Related Equipment, Accessories, and Supplies." Through the Heil contract, Sourcewell members can purchase any of the Heil line of refuse and recycling equipment, including front-loading, side-loading, and rear-loading refuse collection vehicles, without having to create an RFP and send the project through a time-consuming duplicate bid process. By using the existing nationally bid contract, members can receive the products they need more quickly and cost effectively. Best of all, Sourcewell membership is free! Qualified agencies can join online via the Sourcewell purchasing website at [www.sourcewell-mn.gov](http://www.sourcewell-mn.gov). To find out more about purchasing Heil equipment via the Sourcewell contract, please contact your local Heil Dealer at [www.heil.com/dealers](http://www.heil.com/dealers).



**TRUST HEIL CERTIFIED OEM PARTS**

Heil Certified OEM parts are the most reliable replacement parts for Heil refuse collection vehicles. They're made following the exact specifications and production processes on the same assembly lines as the parts originally installed on the bodies. This means that they fit perfectly every time. Heil uses only the highest-quality materials for parts that last - minimizing costly downtime. For more information on parts, contact your Heil dealer. Visit: [www.heil.com/dealers](http://www.heil.com/dealers) to find the dealer nearest you.



**RELY ON EXPERIENCED LOCAL SUPPORT**

When you buy from Heil, you gain the aftermarket support of the industry's strongest network of dealers in North America. We stand behind our dealers, so you get the product support you need for the life of your products. Our dealers are also trained to help you find the best product for your particular route needs. To find the Heil dealer nearest you, visit: [www.heil.com/dealers](http://www.heil.com/dealers).



All Heil products are Connected Collections® ready. This is part of our vision, focused on helping fleet owners make better decisions, faster. For more information on ESG's Connected Collections, contact your local Heil dealer or visit us online at [www.heil.com/connected-collections](http://www.heil.com/connected-collections)

[www.heil.com](http://www.heil.com)



**COUNT ON THE LOWEST TCC**

Helping you save money is our passion, and we apply tremendous resources to advance our product and service offerings to improve the profitability of your business and provide the lowest Total Cost of Collection and the maximum return on your investment. You can be confident that choosing Heil equipment brings a long-term partnership with the industry leader.



**CONFIGURATION ASSISTANCE**

Chassis layout drawings are available through your local Heil dealer. To find your dealer, visit [www.heil.com/dealers](http://www.heil.com/dealers).



**INDUSTRY-LEADING TRAINING**

Heil has completely revamped their training programs with the addition of both the Heil Service Shack® and our four-tiered Nexteligenca® Connected-Tech Training Program. Now, customers can visit the Heil Service Shack on the Heil website to learn the latest techniques and view helpful service and training videos any time, as well as sign up for Connected-Tech courses to better train technicians on Heil Refuse Products. Ensure your shops are servicing your Heil products correctly; check out the Heil training offerings at [www.heil.com/nexteligenca](http://www.heil.com/nexteligenca).



**WE NEVER STOP WORKING FOR YOU**

**[www.heil.com](http://www.heil.com)**

**Contact your Heil® authorized dealer:**