

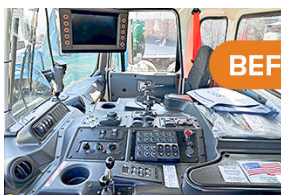
EVERY ROUTE. ONE BODY.

Introducing the engineering innovations of the Heil common body.



2026 DuraPack Python and Heil Half/Pack Common Body

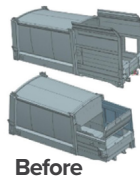
Introducing the 2026 Heil DuraPack Python and Half/Pack, built on a breakthrough common body platform that powers both front and side load applications. With shared components, unified, dramatically simplified in-cab systems, and major ease-of-maintenance improvements, this new generation delivers greater flexibility, and a streamlined operator experience. It's everything customers already trust, significantly enhanced with the most advanced design thinking in the industry.



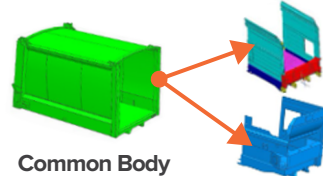
BEFORE



AFTER



Before



Common Body

FEL Hopper

ASL Hopper

OPERATOR EXPERIENCE

Designed with your operators in mind. Driver-designed, ergonomic controls and a simplified interface reduce cab clutter and cut in-cab buttons by 66%, delivering a consistent, intuitive experience across both ASL and FEL vehicles.

COMMON BODY PARTS

Standardized parts simplify operations. A shared body design with 44% or more common components means fewer parts to stock, easier technician training, and reduced downtime across both front and side load fleets.



INTEGRATED CAMERAS

Integrated 3rd Eye cameras come built into the body for better protection, less maintenance, and clearer visibility, all with fewer failures, less downtime, and improved safety, performance, and reliability in every environment.



EASE OF MAINTENANCE

Maintenance is faster and easier with improved access, fewer tools, and a centralized display for diagnostics, 3rd Eye feeds, and body performance data, plus relocated tailgate locks for cleaner, more convenient access.



Scan QR code to learn more or visit www.Heil.com

201 W. Main Street, Suite 300, Chattanooga, TN 37408 | 866.FOR.HEIL (866.367.4345)

